



GAT MONTHLY MEMBERSHIP PROGRESS REPORT

Results as of: 6/30/2022

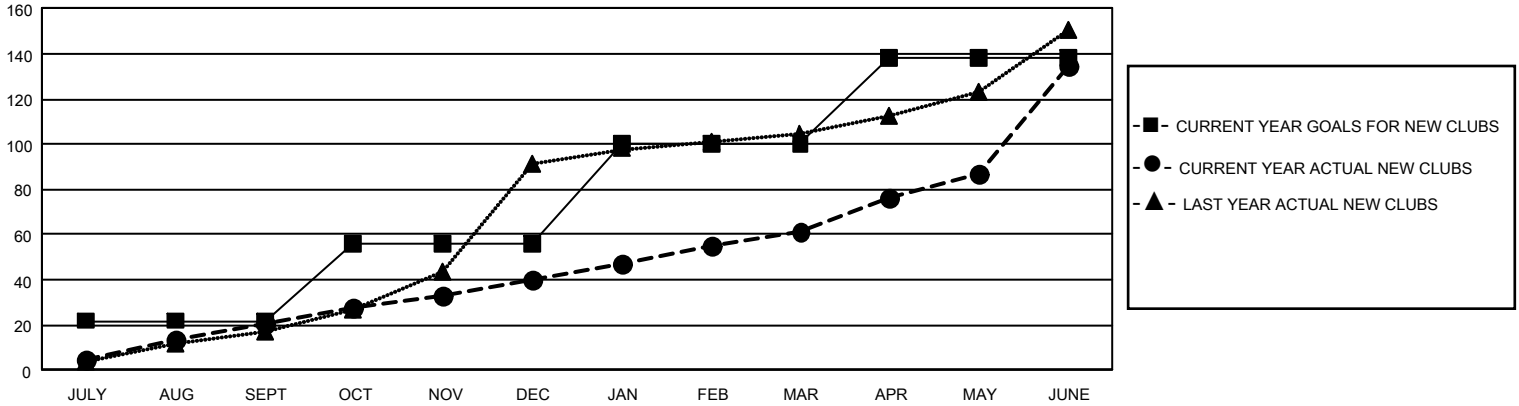
GAT Constitutional Area 3

REPORT DOES NOT INCLUDE CLUBS IN UNDISTRICTED AREAS.

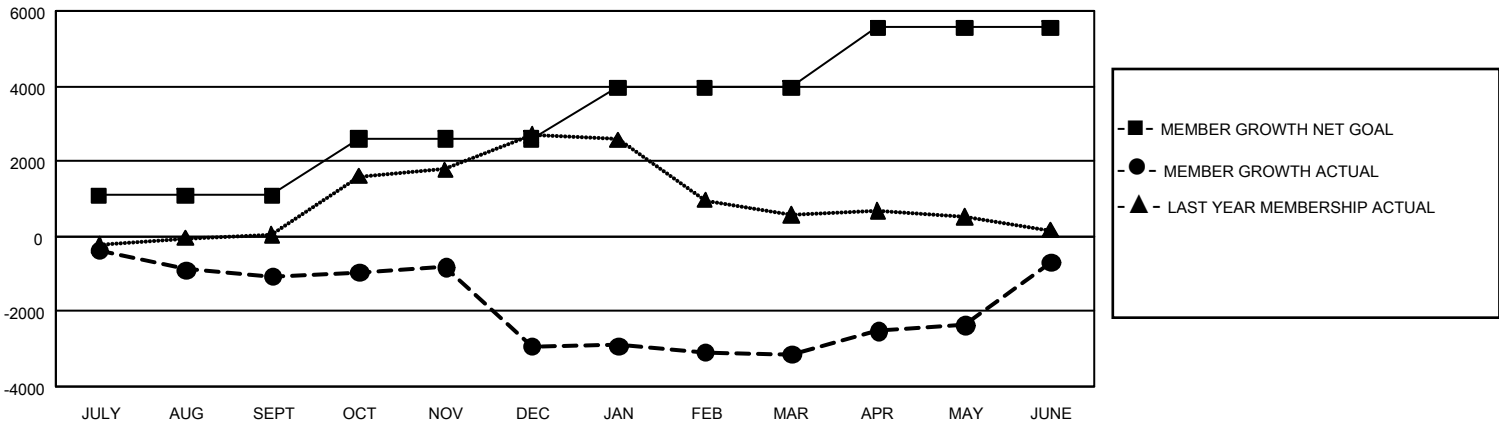
Clubs			
RESULTS FOR 2021-2022			
QUARTER	NEW CLUB GOAL	NEW CLUBS	DROPPED CLUBS
JULY/AUG/SEPT	66	21	56
OCT/NOV/DEC	102	19	64
JAN/FEB/MAR	132	21	30
APR/MAY/JUNE	114	74	23

Members			
RESULTS FOR 2021-2022			
QUARTER	MEMBER GROWTH NET GOAL	MEMBER GROWTH ACTUAL	DROPPED MEMBERS ACTUAL (including transfers)
JULY/AUG/SEPT	1078	2,189	2,935
OCT/NOV/DEC	1524	2,887	4,413
JAN/FEB/MAR	1349	2,095	1,843
APR/MAY/JUNE	1610	6,867	3,988

GOALS AND ACTUAL NEW CLUBS CUMULATIVE



GOALS AND ACTUAL MEMBERS CUMULATIVE



DROPPED CLUBS: 168	
DROPPED MEMBERS	
DECEASED	797
CLUB CANCELLED	2,281
OTHER	10,081
TOTAL	13,159

1,856 CLUBS OF 3,044 ADDED 1 OR MORE NEW MEMBERS

[CLICK HERE FOR CUMULATIVE MEMBERSHIP DATA](#)

GENDER DISTRIBUTION	
MALE	34,536 (46.88%)
FEMALE	39,102 (53.07%)
NON BINARY	1 (0.00%)
PREFER NOT TO ANSWER	35 (0.05%)
TOTAL FAMILY UNIT MEMBERS	28,384
FAMILY MEMBERS PAYING HALF DUES	15,537